



Welcome TO OUR  
**SAFE**  
WORLD



**VE-TO**<sup>®</sup>

ELECTRIC ACCESSORIES

**PRODUCT LINE**



Discover  
the potential

**ISO** 4501 / 1401 / 1002 / 9001 **CE**

[www.ve-to.com](http://www.ve-to.com)

 VETOELECTRIC

# VE-TO

Electric Accessories

PRODUCT LINE





VE-TO operates in its industrial facilities in Istanbul and aims to deliver innovative products and solutions that provide comfort, security, and energy efficiency to the world markets and to provide a better and more comfortable life with human

VE-TO having industrial facilities that implemented all integrations required by technological transformation carries out R & D, innovation and design studies successfully to produce products and solutions to improve the quality of living spaces of users and to offer innovative products to the market.

In the product range of VE-TO; there is Electric Switches and Sockets, Group Sockets, Accessories, Low-Voltage Switchgear Products, Fuse Boxes, Electronic Electricity Meters, Automated

Information Security Systems as a result of its approach to quality, safety

## Our Vision



## Earthed Male Plug 4 / 4.8 mm



ITEM CODE 11004  
ITEM CODE 11005

Available colors

ITEM CODE	PRODUCT NAME	IN A BOX	Rated current	Rater voltage	Material	Cbm
11004	Earthed Male Plug 4 mm	600	16A	250V~	plastic ABS	0.0746
11005	Earthed Male Plug 5 mm	600	16A	250V~	plastic ABS	0.0746

## Earthed Male Plug 4 / 4.8 mm (L)



ITEM CODE 13004  
ITEM CODE 13005

Available colors

ITEM CODE	PRODUCT NAME	IN A BOX	Rated current	Rater voltage	Material	Cbm
13004	Earthed Male Plug 4 mm (L)	600	16A	250V~	plastic ABS	0.0746
13005	Earthed Male Plug 5 mm (L)	600	16A	250V~	plastic ABS	0.0746

## Earthed Female Plug



ITEM CODE 12001

Available colors

ITEM CODE	PRODUCT NAME	IN A BOX	Rated current	Rater voltage	Material	Cbm
12001	Earthed Female Plug	360	16A	250V~	plastic ABS	0.0746

## Female Plug

ITEM CODE 12101

Available colors



ITEM CODE	PRODUCT NAME	IN A BOX	Rated current	Rater voltage	Material	Cbm
12101	Female Plug	1200	10A	250V~	plastic ABS	0.0746

## Male Plug

ITEM CODE 11101

Available colors



ITEM CODE	PRODUCT NAME	IN A BOX	Rated current	Rater voltage	Material	Cbm
11101	Male Plug	900	10A	250V~	plastic ABS	0.0746

## 3 GANG EARTHED PLUG & SOCKET

ITEM CODE 32001

Available colors



ITEM CODE	PRODUCT NAME	IN A BOX	Rated current	Rater voltage	Material	Cbm
32001	Triple Plug & Socket ( m1)	50	16-10A	250V~	plastic ABS	0.0269

ACCESSORIES



## American Adapter

ITEM CODE 34001

Available colors



ITEM CODE	PRODUCT NAME	IN A BOX	Rated current	Rater voltage	Material	Cbm
34001	Universal Adapter	1600	10A	250V~	plastic ABS	0.0746

## Universal Adapter

ITEM CODE 31002

Available colors



ITEM CODE	PRODUCT NAME	IN A BOX	Rated current	Rater voltage	Material	Cbm
31002	Universal Adapter	480	16A	250V~	plastic ABS	0.0746

## British MK Adapter Plug

ITEM CODE 31001

Available colors



ITEM CODE	PRODUCT NAME	IN A BOX	Rated current	Rater voltage	Material	Cbm
31001	British MK Adapter Plug	720	A16-10	250V~	plastic ABS	0.0746



## Quintette Plug & Socket

ITEM CODE 33001

Available colors



ITEM CODE	PRODUCT NAME	IN A BOX	Rated current	Rater voltage	Material	Cbm
33002	Quintette Plug & Socket	540	10A	250V~	plastic ABS	0.0746

## Triple Plug & Socket

ITEM CODE 32001

Available colors



ITEM CODE	PRODUCT NAME	IN A BOX	Rated current	Rater voltage	Material	Cbm
32001	Triple Plug & Socket	600	10A	250V~	plastic ABS	0.0746

## Triple Plug & Socket ( T )

ITEM CODE 32002

Available colors



ITEM CODE	PRODUCT NAME	IN A BOX	Rated current	Rater voltage	Material	Cbm
32002	Triple Plug & Socket ( T )	720	10A	250V~	plastic ABS	0.0746

ACCESSORIES



## RUBBER EARTHED 2 GANG GROUP SOCKET

ITEM CODE 18001



ITEM CODE	PRODUCT NAME	IN A BOX	Rated current	Rater voltage	Material	Cbm
18001	RUBBER EARTHED 2 GANG GROUP SOCKET	30	16A	250V~	Rubber Earthed	0.0269

## RUBBER EARTHED 3 GANG GROUP SOCKET

ITEM CODE 18002



ITEM CODE	PRODUCT NAME	IN A BOX	Rated current	Rater voltage	Material	Cbm
18002	RUBBER EARTHED 3 GANG GROUP SOCKET	25	16A	250V~	Rubber Earthed	0.0269

## Rubber Earthed Male Plug

ITEM CODE 18005



ITEM CODE	PRODUCT NAME	IN A BOX	Rated current	Rater voltage	Material	Cbm
18005	Rubber Earthed Male Plug5- mm	360	16A	250V~	Rubber Earthed	0.0746

## Rubber Earthed Female Plug

ITEM CODE 18008



ITEM CODE	PRODUCT NAME	IN A BOX	Rated current	Rater voltage	Material	Cbm
18008	Rubber Earthed Female Plug	240	16A	250V~	Rubber Earthed	0.0746

ACCESSORIES



## DOWN SOCKET

ITEM CODE 36001

Available colors



ITEM CODE	PRODUCT NAME	IN A BOX	Rated current	Rater voltage	Material	Cbm
36001	DOWN SOCKET	600	100w	250V~	plastic ABS	0.0746

## WALL LAMP HOLDER

ITEM CODE 36005

Available colors



ITEM CODE	PRODUCT NAME	IN A BOX	Rated current	Rater voltage	Material	Cbm
36005	WALL LAMP HOLDER	480	100w	250V~	plastic ABS	0.0746

## LAMP SOCKET PLUG

ITEM CODE 36006

Available colors



ITEM CODE	PRODUCT NAME	IN A BOX	Rated current	Rater voltage	Material	Cbm
36006	LAMP SOCKET PLUG	500	100w	250V~	Rubber Earthed	0.0746

## PENDANT LAMP HOLDER

ITEM CODE 36007

Available colors



ITEM CODE	PRODUCT NAME	IN A BOX	Rated current	Rater voltage	Material	Cbm
36007	PENDANT LAMP HOLDER	25	100w	250V~	Rubber Earthed	0.0269

ACCESSORIES



## TRIPLE SWITCH WITH LIGHT



ITEM CODE V14114  
V21114

Available colors

ITEM CODE	PRODUCT NAME	IN A BOX	Rated current	Rater voltage	Material	Cbm
V14114	TRIPLE SWITCH WITH LIGHT	900	16A	250V~		0.0746
V21114	TRIPLE SWITCH WITHOUT LIGHT	900	16A	250V~		0.0746

## DOUBLE SWITCH WITH LIGHT



ITEM CODE V13113  
V21113

Available colors

ITEM CODE	PRODUCT NAME	IN A BOX	Rated current	Rater voltage	Material	Cbm
V13113	DOUBLE SWITCH WITH LIGHT	1200	16A	250V~		0.0746
V13113	DOUBLE SWITCH WITH LIGHT	1200	16A	250V~		0.0746

## SWITCH WITH LIGHT SLIM



ITEM CODE V13112  
V21112

Available colors

ITEM CODE	PRODUCT NAME	IN A BOX	Rated current	Rater voltage	Material	Cbm
V13112	SWITCH WITHOUT LIGHT SLIM	1800	16A	250V~		0.0746
V21112	SWITCH WITHOUT LIGHT SLIM	1800	16A	250V~		0.0746

## SWITCH WITH LIGHT



ITEM CODE V 12111  
V 22111

Available colors

ITEM CODE	PRODUCT NAME	IN A BOX	Rated current	Rater voltage	Material	Cbm
V12111	SWITCH WITH LIGHET	1200	16A	250V~	Rubber Earthed	0.0746
V22111	SWITCH WITHOUT LIGHET	1200	16A	250V~	Rubber Earthed	0.0746

## Earthed Male Plug 5 mm 16A With Switch



ITEM CODE 22020

Available colors

ITEM CODE	PRODUCT NAME	IN A BOX	Rated current	Rater voltage	Material	Cbm
22020	Triple Plug & Socket ( m2)	480	16A	250V~	plastic ABS	0.0746

## Intermediate Switch



ITEM CODE 22001

Available colors

ITEM CODE	PRODUCT NAME	IN A BOX	Rated current	Rater voltage	Material	Cbm
22001	Intermediate Switch	1600	16A	250V~	plastic ABS	0.0746

ACCESSORIES





## WIRING ACCESSORIES


**ITEM CODE**

P5003

**PRODUCT NAME**
Armor to use  
3 MODULES 119mm
**ITEM CODE**

P5004

**PRODUCT NAME**
Armor to use  
4 MODULES 145mm
**ITEM CODE**

P5006

**PRODUCT NAME**
Armor to use  
6 MODULES 195mm
**ITEM CODE**

P5103

**PRODUCT NAME**
Blanc White  
3 MODULES 119mm
**ITEM CODE**

P5101

**PRODUCT NAME**
Blanc White  
1 MODULES 119mm

ITEM CODE	PRODUCT NAME
P5102	Blanc White 2 MODULES 119mm

ITEM CODE	PRODUCT NAME
P5106	Blanc White 4 MODULES 145mm

ITEM CODE	PRODUCT NAME
P5106	Blanc white 6 MODULES 195mm

ITEM CODE	PRODUCT NAME
P5202	16A 2 way switch
P5202	16A 2 way switch
P-5201L	1 way switch with neon 16A

ITEM CODE	PRODUCT NAME
P5301	Eure-American Soket 16A
P-5301E	Eure-American Soket 16A Earthed
P-5302E	Italian socket with safety door Earthed 16A

ITEM CODE	PRODUCT NAME
P-5303E	European socket Earthed with safety door 16A
P5303	European socket with safety door 16A

ITEM CODE	PRODUCT NAME
P5304	Universal Soket 16A



## Switch and Socket Series



## WIRING ACCESSORIES



ITEM CODE	PRODUCT NAME
P5305	British MK Soket with safety door



ITEM CODE	PRODUCT NAME
P5401	Telephon Socket Cat3



ITEM CODE	PRODUCT NAME
P5402	Data Cat6



ITEM CODE	PRODUCT NAME
P5403	USB



ITEM CODE	PRODUCT NAME
P5404	TV Socket Outlet



ITEM CODE	PRODUCT NAME
P5405	Satellite Socket Outlet



ITEM CODE	PRODUCT NAME
P5000	Blanking



ITEM CODE	PRODUCT NAME
P5406	Control Switch - Bell



ITEM CODE	PRODUCT NAME
P5301	Buzzer Bell



ITEM CODE	PRODUCT NAME
P5408	light dimmer 250w(1 gang)



ITEM CODE	PRODUCT NAME
P5409	LED light



## Switch and Socket Series





## UNIVERSAL PLUG TYPE





# Switch and Socket Series



## ACCESSORIES



ITEM CODE	PRODUCT NAME
<b>P5203</b>	24A 1 Way Switch





## ACCESSORIES

ITEM CODE	PRODUCT NAME
<b>P5306</b>	Box With Lid



# ABS PANO OPAK

ACCESSORIES







ITEM CODE	PRODUCT NAME	QTY IN a BOX
VV 9001	200 × 300 × 130 mm	1
VV 9002	250 × 350 × 150 mm	1
VV 9003	300 × 400 × 170 mm	1
VV 9004	300 × 500 × 220 mm	1
VV 9005	350 × 500 × 190 mm	1
VV 9006	400 × 500 × 180 mm	1
VV 9007	400 × 500 × 240 mm	1
VV 9008	400 × 600 × 200 mm	1
VV 9009	500 × 700 × 250 mm	1
VV 9010	600 × 800 × 260 mm	1
VVPC 9001	200 × 300 × 130 mm	1
VVPC 9002	250 × 350 × 150 mm	1
VVPC 9003	300 × 400 × 170 mm	1
VVPC 9004	300 × 500 × 220 mm	1
VVPC 9005	350 × 500 × 190 mm	1
VVPC 9006	400 × 500 × 180 mm	1
VVPC 9007	400 × 500 × 240 mm	1
VVPC 9008	400 × 600 × 200 mm	1
VVPC 9009	500 × 700 × 250 mm	1
VVPC 9010	600 × 800 × 260 mm	1

## ACCESSORIES



# ASPIRATOR



**A-VE 100****ITEM CODE A-VE 100**Available colors   

ITEM CODE	PRODUCT NAME	IN A BOX	Rated current	Rater voltage	Material	Cbm
A-VE100	100x100 ASPIRATOR 12W	20	12W	250V~	plastic ABS	0.0746

**A-VE 120****ITEM CODE A-VE120**Available colors   

ITEM CODE	PRODUCT NAME	IN A BOX	Rated current	Rater voltage	Material	Cbm
A-VE120	120x120 ASPIRATOR 15W	18	16W	250V~	plastic ABS	0.0746

**A-VE 150****ITEM CODE A-VE150**Available colors   

ITEM CODE	PRODUCT NAME	IN A BOX	Rated current	Rater voltage	Material	Cbm
A-VE150	150x150 ASPIRATOR 20W	1600	20W	250V~	plastic ABS	0.0746

**ASPIRATOR**

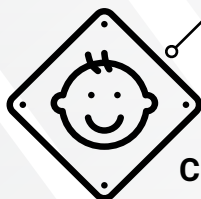
**GROUP SOCKET**



USB PLUG



POWER SWITCH



CHILDREN SAFE LOCK



UNFLAMABLE

Available colors

**GROUP SOCKET**



ISO 4501 / 1401 / 1002 / 9001 **CE**

[www.ve-to.com](http://www.ve-to.com)  
VETOELECTRIC

## GROUP SOCKET



ITEM CODE	PRODUCT NAME	Cbm	QTY IN a BOX
G 53100	EARTHED 3 GANG GROUP SOCKET ( CHILD PROOF ) 16W	0.0269	45
G 53102	EARTHED 3 GANG GROUP SOCKET <b>2M</b> ( CHILD PROOF ) 16W	0.0269	20
G 53103	EARTHED 3 GANG GROUP SOCKET <b>3M</b> ( CHILD PROOF ) 16W	0.0269	20
G 53105	EARTHED 3 GANG GROUP SOCKET <b>5M</b> ( CHILD PROOF ) 16W	0.0269	20

G 54100	EARTHED 4 GANG GROUP SOCKET ( CHILD PROOF ) 16W	0.0269	30
G 54102	EARTHED 4 GANG GROUP SOCKET <b>2M</b> ( CHILD PROOF ) 16W	0.0269	15
G 54103	EARTHED 4 GANG GROUP SOCKET <b>3M</b> ( CHILD PROOF ) 16W	0.0269	15
G 54105	EARTHED 4 GANG GROUP SOCKET <b>5M</b> ( CHILD PROOF ) 16W	0.0269	15

G 56100	EARTHED 6 GANG GROUP SOCKET ( CHILD PROOF ) 16W	0.0269	20
G 56102	EARTHED 6 GANG GROUP SOCKET <b>2M</b> ( CHILD PROOF ) 16W	0.0269	10
G 56103	EARTHED 6 GANG GROUP SOCKET <b>3M</b> ( CHILD PROOF ) 16W	0.0269	10
G 56105	EARTHED 6 GANG GROUP SOCKET <b>5M</b> ( CHILD PROOF ) 16W	0.0269	10

G 53110	EARTHED 3 GANG GROUP SOCKET WITH SWITCH ( CHILD PROOF ) 16W	0.0269	45
G 53112	EARTHED 3 GANG GROUP SOCKET <b>2M</b> WITH SWITCH ( CHILD PROOF ) 16W	0.0269	20
G 53113	EARTHED 3 GANG GROUP SOCKET <b>3M</b> WITH SWITCH ( CHILD PROOF ) 16W	0.0269	20
G 53115	EARTHED 3 GANG GROUP SOCKET <b>5M</b> WITH SWITCH ( CHILD PROOF ) 16W	0.0269	20

G 54110	EARTHED 4 GANG GROUP SOCKET WITH SWITCH ( CHILD PROOF ) 16W	0.0269	v
G 54112	EARTHED 4 GANG GROUP SOCKET <b>2M</b> WITH SWITCH ( CHILD PROOF ) 16W	0.0269	15
G 54113	EARTHED 4 GANG GROUP SOCKET <b>3M</b> WITH SWITCH ( CHILD PROOF ) 16W	0.0269	15
G 54115	EARTHED 4 GANG GROUP SOCKET <b>5M</b> WITH SWITCH ( CHILD PROOF ) 16W	0.0269	15





ITEM CODE	PRODUCT NAME	Cbm	QTY IN a BOX
G 56110	EARTHED 6 GANG GROUP SOCKET WITH SWITCH ( CHILD PROOF ) 16W	0.0269	20
G 56112	EARTHED 6 GANG GROUP SOCKET 2M WITH SWITCH ( CHILD PROOF ) 16W	0.0269	10
G 56113	EARTHED 6 GANG GROUP SOCKET 3M WITH SWITCH ( CHILD PROOF ) 16W	0.0269	10
G 56115	EARTHED 6 GANG GROUP SOCKET 5M WITH SWITCH ( CHILD PROOF ) 16W	0.0269	10

G 53000	3 GANG GROUP SOCKET WITHOUT EARTHED ( CHILD PROOF ) 16W	0.0269	45
G 53002	3 GANG GROUP SOCKET 2M WITHOUT EARTHED ( CHILD PROOF ) 16W	0.0269	20
G 53003	3 GANG GROUP SOCKET 3M WITHOUT EARTHED ( CHILD PROOF ) 16W	0.0269	20
G 53005	3 GANG GROUP SOCKET 5M WITHOUT EARTHED ( CHILD PROOF ) 16W	0.0269	20

G 54000	4 GANG GROUP SOCKET WITHOUT EARTHED ( CHILD PROOF ) 16W	0.0269	30
G 54002	4 GANG GROUP SOCKET 2M WITHOUT EARTHED ( CHILD PROOF ) 16W	0.0269	15
G 54003	4 GANG GROUP SOCKET 3M WITHOUT EARTHED ( CHILD PROOF ) 16W	0.0269	15
G 54005	4 GANG GROUP SOCKET 5M WITHOUT EARTHED ( CHILD PROOF ) 16W	0.0269	15

G 53010	EARTHED 3 GANG GROUP SOCKET ( CHILD PROOF ) 16W	0.0269	45
G 53012	EARTHED 3 GANG GROUP SOCKET 2M ( CHILD PROOF ) 16W	0.0269	20
G 53013	EARTHED 3 GANG GROUP SOCKET 3M ( CHILD PROOF ) 16W	0.0269	20
G 53015	EARTHED 3 GANG GROUP SOCKET 5M ( CHILD PROOF ) 16W	0.0269	20

G 54010	4 GANG GROUP SOCKET WITH SWITCH WITHOUT EARTHED ( CHILD PROOF ) 16W	0.0269	30
G 54012	4 GANG GROUP SOCKET 2M WITH SWITCH WITHOUT EARTHED ( CHILD PROOF ) 16W	0.0269	15
G 54013	4 GANG GROUP SOCKET 3M WITH SWITCH WITHOUT EARTHED ( CHILD PROOF ) 16W	0.0269	15
G 54015	4 GANG GROUP SOCKET 5M WITH SWITCH WITHOUT EARTHED ( CHILD PROOF ) 16W	0.0269	15

## GROUP SOCKET



## GROUP SOCKET



ITEM CODE	PRODUCT NAME	Cbm	QTY IN a BOX
GU 53102	EARTHED 3 GANG GROUP SOCKET 2M WITH USB ( CHILD PROOF ) 16W	0.0269	20
GU 53103	EARTHED 3 GANG GROUP SOCKET 3M WITH USB ( CHILD PROOF ) 16W	0.0269	20
GU 53105	EARTHED 3 GANG GROUP SOCKET 5M WITH USB ( CHILD PROOF ) 16W	0.0269	20
G 53105	EARTHED 3 GANG GROUP SOCKET 5M ( CHILD PROOF ) 16W	0.0269	20

GU 54102	EARTHED 4 GANG GROUP SOCKET 2M WITH USB ( CHILD PROOF ) 16W	0.0269	15
GU 54103	EARTHED 4 GANG GROUP SOCKET 3M WITH USB ( CHILD PROOF ) 16W	0.0269	15
GU 54105	EARTHED 4 GANG GROUP SOCKET 5M WITH USB ( CHILD PROOF ) 16W	0.0269	15
G 54105	EARTHED 4 GANG GROUP SOCKET 5M ( CHILD PROOF ) 16W	0.0269	15

GU 56100	EARTHED 6 GANG GROUP SOCKET WITH USB ( CHILD PROOF ) 16W	0.0269	20
GU 56102	EARTHED 6 GANG GROUP SOCKET 2M WITH USB ( CHILD PROOF ) 16W	0.0269	10
GU 56103	EARTHED 6 GANG GROUP SOCKET 3M WITH USB ( CHILD PROOF ) 16W	0.0269	10
GU 56105	EARTHED 6 GANG GROUP SOCKET 5M WITH USB ( CHILD PROOF ) 16W	0.0269	10

GU 56110	EARTHED 6 GANG GROUP SOCKET WITH USB & SWITCH ( CHILD PROOF ) 16W	0.0269	20
GU 56112	EARTHED 6 GANG GROUP SOCKET 2M WITH USB & SWITCH ( CHILD PROOF ) 16W	0.0269	10
GU 56113	EARTHED 6 GANG GROUP SOCKET 3M WITH USB & SWITCH ( CHILD PROOF ) 16W	0.0269	10
GU 56115	EARTHED 6 GANG GROUP SOCKET 5M WITH USB & SWITCH ( CHILD PROOF ) 16W	0.0269	10

GS 53000	3 GANG SLIM 270MM GROUP SOCKET WITHOUT EARTHED 16W	0.0269	85
GS 53002	3 GANG SLIM 270MM GROUP SOCKET 2M WITHOUT EARTHED 16W	0.0269	40
GS 53003	3 GANG SLIM 270MM GROUP SOCKET 3M WITHOUT EARTHED 16W	0.0269	40
GS 53005	3 GANG SLIM 270MM GROUP SOCKET 5M WITHOUT EARTHED 16W	0.0269	40



ITEM CODE	PRODUCT NAME	Cbm	QTY IN a BOX
GF 53100	FRENCH EARTHED 3 GANG GROUP SOCKET ( CHILD PROOF ) 45 16W	0.0269	45
GF 53102	FRENCH EARTHED 3 GANG GROUP SOCKET 2M ( CHILD PROOF ) 16W	0.0269	20
GF 53103	FRENCH EARTHED 3 GANG GROUP SOCKET 3M ( CHILD PROOF ) 16W	0.0269	20
GF 53105	FRENCH EARTHED 3 GANG GROUP SOCKET 5M ( CHILD PROOF ) 16W	0.0269	20



GF 54100	FRENCH EARTHED 4 GANG GROUP SOCKET ( CHILD PROOF ) 16W	0.0269	30
GF 54102	FRENCH EARTHED 4 GANG GROUP SOCKET 2M ( CHILD PROOF ) 16W	0.0269	15
GF 54103	FRENCH EARTHED 4 GANG GROUP SOCKET 3M ( CHILD PROOF ) 16W	0.0269	15
GF 54105	FRENCH EARTHED 4 GANG GROUP SOCKET 5M ( CHILD PROOF ) 16W	0.0269	15



GF 53110	EARTHED 6 GANG GROUP SOCKET WITH USB ( CHILD PROOF ) 16W	0.0269	45
GF 53112	FRENCH EARTHED 3 GANG GROUP SOCKET 2M WITH SWITCH ( CHILD PROOF ) 16W	0.0269	20
GF 53113	FRENCH EARTHED 3 GANG GROUP SOCKET 3M WITH SWITCH ( CHILD PROOF ) 16W	0.0269	20
GF 53115	FRENCH EARTHED 3 GANG GROUP SOCKET 5M WITH SWITCH ( CHILD PROOF ) 16W	0.0269	20



GF 54110	FRENCH EARTHED 4 GANG GROUP SOCKET WITH SWITCH ( CHILD PROOF ) 16W	0.0269	30
GF 54112	FRENCH EARTHED 4 GANG GROUP SOCKET 2M WITH SWITCH ( CHILD PROOF ) 16W	0.0269	15
GF 54113	FRENCH EARTHED 4 GANG GROUP SOCKET 3M WITH SWITCH ( CHILD PROOF ) 16W	0.0269	15
GF 54115	FRENCH EARTHED 4 GANG GROUP SOCKET 5M WITH SWITCH ( CHILD PROOF ) 16W	0.0269	15

**GROUP SOCKET  
FRENCH SYSTEM**



# GROUP SOCKET UNIVERSAL



ITEM CODE	PRODUCT NAME	Cbm	QTY IN a BOX
GN 52100	2 GANG UNIVERSAL GROUP PLUG 16W	0.0269	50
GN 52102	2 GANG UNIVERSAL GROUP PLUG 2MT 16W	0.0269	30
GN 52103	2 GANG UNIVERSAL GROUP PLUG 3MT 16W	0.0269	30
GN 52105	2 GANG UNIVERSAL GROUP PLUG 5MT 16W	0.0269	25

GN 52110	2 GANG UNIVERSAL SWITCH GROUP PLUG 16W	0.0269	50
GN 52112	2 GANG UNIVERSAL SWITCH GROUP PLUG 2MT 16W	0.0269	30
GN 52113	2 GANG UNIVERSAL SWITCH GROUP PLUG 3MT 16W	0.0269	30
GN 52115	2 GANG UNIVERSAL SWITCH GROUP PLUG 5MT 16W	0.0269	25

GN 53100	3 GANG UNIVERSAL GROUP PLUG 16W	0.0269	45
GN 53102	3 GANG UNIVERSAL GROUP PLUG 2MT 16W	0.0269	20
GN 53103	3 GANG UNIVERSAL GROUP PLUG 3MT 16W	0.0269	20
GN 53105	3 GANG UNIVERSAL GROUP PLUG 5MT 16W	0.0269	20

GN 53110	3 GANG UNIVERSAL SWITCH GROUP PLUG 16W	0.0269	45
GN 53112	3 GANG UNIVERSAL SWITCH GROUP PLUG 2MT 16W	0.0269	20
GN 53113	3 GANG UNIVERSAL SWITCH GROUP PLUG 3MT 16W	0.0269	20
GN 53115	3 GANG UNIVERSAL SWITCH GROUP PLUG 5MT 16W	0.0269	20

GN 54100	4 GANG UNIVERSAL GROUP PLUG 16W	0.0269	45
GN 54102	4 GANG UNIVERSAL GROUP PLUG 2MT 16W	0.0269	20
GN 54103	4 GANG UNIVERSAL GROUP PLUG 3MT 16W	0.0269	20
GN 54105	4 GANG UNIVERSAL GROUP PLUG 5MT 16W	0.0269	20

GN 54110	4 GANG UNIVERSAL SWITCH GROUP PLUG 16W	0.0269	45
GN 54112	4 GANG UNIVERSAL SWITCH GROUP PLUG 2MT 16W	0.0269	20
GN 54113	4 GANG UNIVERSAL SWITCH GROUP PLUG 3MT 16W	0.0269	20
GN 54115	4 GANG UNIVERSAL SWITCH GROUP PLUG 5MT 16W	0.0269	20



ITEM CODE	PRODUCT NAME	Cbm	QTY IN a BOX
GN 56100	6 GANG UNIVERSAL GROUP PLUG 16W	0.0269	20
GN 56102	6 GANG UNIVERSAL GROUP PLUG 2MT 16W	0.0269	10
GN 56103	6 GANG UNIVERSAL GROUP PLUG 3MT 16W	0.0269	10
GN 56105	6 GANG UNIVERSAL GROUP PLUG 5MT 16W	0.0269	10

GN 56110	6 GANG UNIVERSAL SWITCH GROUP PLUG 16W	0.0269	20
GN 56112	6 GANG UNIVERSAL SWITCH GROUP PLUG 2MT 16W	0.0269	10
GN 56113	6 GANG UNIVERSAL SWITCH GROUP PLUG 3MT 16W	0.0269	10
GN 56115	6 GANG UNIVERSAL SWITCH GROUP PLUG 5MT 16W	0.0269	10

GN 542100	UNIVERSAL 2+2 GROUP PLUG 16W	0.0269	45
GN 542102	UNIVERSAL 2+2 GROUP PLUG 2MT 16W	0.0269	20
GN 542103	UNIVERSAL 2+2 GROUP PLUG 3MT 16W	0.0269	20
GN 542105	UNIVERSAL 2+2 GROUP PLUG 5MT 16W	0.0269	20

GN 542110	UNIVERSAL 2+2 SWITCH GROUP PLUG 16W	0.0269	45
GN 542112	UNIVERSAL 2+2 SWITCH GROUP PLUG 2MT 16W	0.0269	20
GN 542113	UNIVERSAL 2+2 SWITCH GROUP PLUG 3MT 16W	0.0269	20
GN 542115	UNIVERSAL 2+2 SWITCH GROUP PLUG 5MT 16W	0.0269	20

GN 563100	UNIVERSAL 3+3 GROUP PLUG 16W	0.0269	20
GN 563102	UNIVERSAL 3+3 GROUP PLUG 2MT 16W	0.0269	10
GN 563103	UNIVERSAL 3+3 GROUP PLUG 3MT 16W	0.0269	10
GN 563105	UNIVERSAL 3+3 GROUP PLUG 5MT 16W	0.0269	10

GN 563110	UNIVERSAL 3+3 SWITCH GROUP PLUG 16W	0.0269	20
GN 563112	UNIVERSAL 3+3 SWITCH GROUP PLUG 2MT 16W	0.0269	10
GN 563113	UNIVERSAL 3+3 SWITCH GROUP PLUG 3MT 16W	0.0269	10
GN 563115	UNIVERSAL 3+3 SWITCH GROUP PLUG 5MT 16W	0.0269	10

## GROUP SOCKET UNIVERSAL









# FLUSH BOXES

ACCESSORIES



**FLUSH BOX 2 WAY****ITEM CODE B 20002**

ITEM CODE	PRODUCT NAME	CBM	IN A BOX
B 20002	FLUSH BOX 2 WAY		30
B40002	FLUSH BOX 4 WAY		30

**FLUSH BOX 6 WAY****ITEM CODE B 60002**

ITEM CODE	PRODUCT NAME	CBM	IN A BOX
B 60002	FLUSH BOX 6 WAY		30

**FLUSH BOX 9 WAY****ITEM CODE B 90002**

ITEM CODE	PRODUCT NAME	CBM	IN A BOX
B 90002	FLUSH BOX 9 WAY		30

**FLUSH BOX 12 WAY****ITEM CODE B 12002**

ITEM CODE	PRODUCT NAME	CBM	IN A BOX
B 12002	FLUSH BOX 12 WAY		20

**FLUSH BOX 16 WAY****ITEM CODE B 16002**

ITEM CODE	PRODUCT NAME	CBM	IN A BOX
B16002	FLUSH BOX 24 WAY		20

**FLUSH BOX 24 WAY  
FLUSH BOX 36 WAY****ITEM CODE B 24002  
ITEM CODE B 36002**

ITEM CODE	PRODUCT NAME	CBM	IN A BOX
B 24002	FLUSH BOX 24 WAY		10
B 36002	FLUSH BOX 36 WAY		10

**FLUSH BOXES**
[www.ve-to.com](http://www.ve-to.com)

VETOELECTRIC

VO 7020

∅  
265 mm

4/32

Damla Glop Armature

VO 7021

∅  
265 mm

4/32

Delta Glop Armature

VO 7022

∅  
265 mm

4/32

Gama Glop Armature

VO 7023

∅  
265 mm

4/32

Yonca Glop Armature

VO 7024

∅  
265 mm

4/32

Venüs Glop Armature

VO 7025

∅  
265 mm

4/32

Neptün Glop Armature

VO 7026

∅  
265 mm

4/32

Mega Glop Armature

VO 7027

∅  
265 mm

4/32

Omega Glop Armature

MD 7028

∅  
265 mm

4/32

Epsilon Glop Armature

VO 7013



4/48

Oval Kafesli Armature

VO 7014



4/48

Oval Kafesli Eko Camlı Armature

MD 7015



4/48

Oval Armature

VO 7001



VO 7002



VO 7003



VO 7004



VO 7005



VO 7006



VO 7007



VO 7008



VO 7009



VO 7010



VO 7011



VO 7012



LIGHTING



**CABLE TRUNKING**



12 x 12



15 x 10



16 x 16



20 x 10



25 x 16



25 x 25



40 x 16



40 x 25

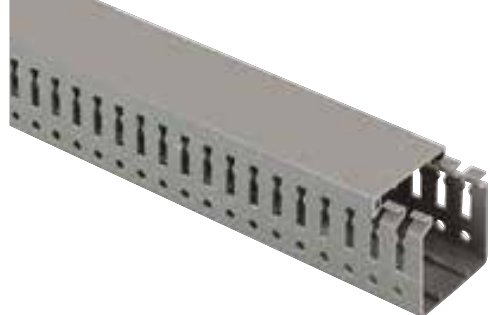


40 x 40



**CLOSED  
TYPE CABLE  
TRUNKINGS**

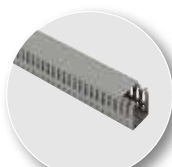




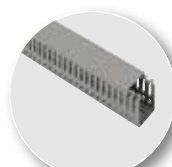
# PVC SLOTTED CABLE TRUNKINGS GREY



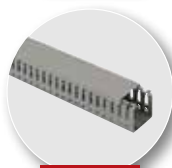
25 x 25



25 x 40



25 x 60



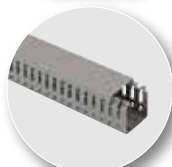
40 x 40



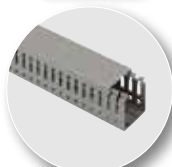
40 x 60



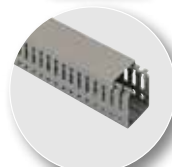
40 x 80



60 x 60



60 x 80



80 x 60



12x12



15x10



16x16



20x10



25x16



25x25



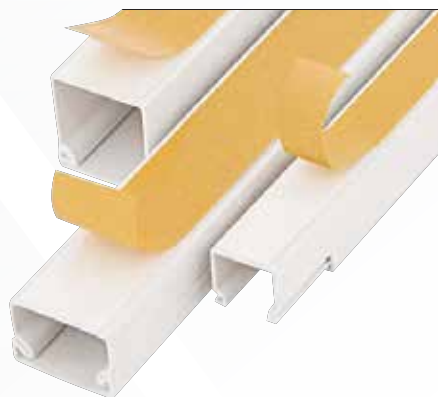
40x16



40x25



40x40



# SELF ADHESIVE CABLE TRUNKINGS

CABLE TRUNKING





# PORTABLE REEL EXTENSION

# The Power OF SAFETY



ITEM CODE	PRODUCT NAME	IN A BOX	Material	Cbm
CM1000	PORTABLE REEL EXTENSION	4	plastic ABS	0.0746
CM1120	PORTABLE REEL EXTENSION 20 M 1.5×3	4	plastic ABS	
CM1135	PORTABLE REEL EXTENSION 35 M 1.5×3	4	plastic ABS	
CM1150	PORTABLE REEL EXTENSION 50 M 1.5×3	4	plastic ABS	
CM1020	PORTABLE REEL EXTENSION 20 M 2.5×3	4	plastic ABS	
CM1030	PORTABLE REEL EXTENSION 30 M 2.5×3	4	plastic ABS	
CM1040	PORTABLE REEL EXTENSION 40 M 2.5×3	4	plastic ABS	
CM1050	PORTABLE REEL EXTENSION 50 M 2.5×3	4	plastic ABS	







**VE-TO**  
Electric Accessories



**VE-TO**<sup>®</sup>  
ELECTRIC ACCESSORIES



BOSFORIUM

Mobile : +90 553 157 42 99  
Phone fax : +90 212 486 00 66  
E-mail : ve-to@outlook.com  
Website : www.ve-to.com  
İKİTELLİ Mah . İ.O.S.B MUTSAN SANAYİ SİTESİ .  
M-12 BLOK NO:6 BAŞAKŞEHİR  
İSTANBUL - TÜRKİYE